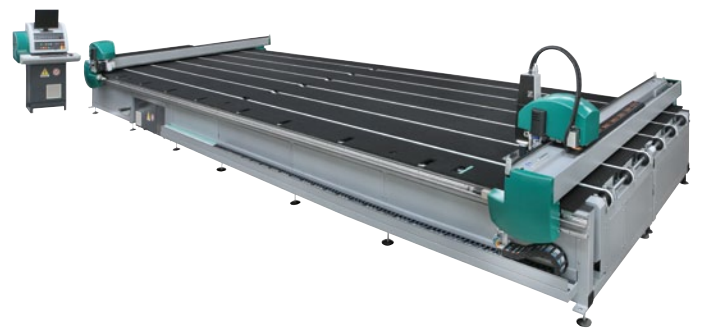


**Bottero**  
Glass Technologies



**evolved multifunction system**



**Bottero**  
Glass Technologies



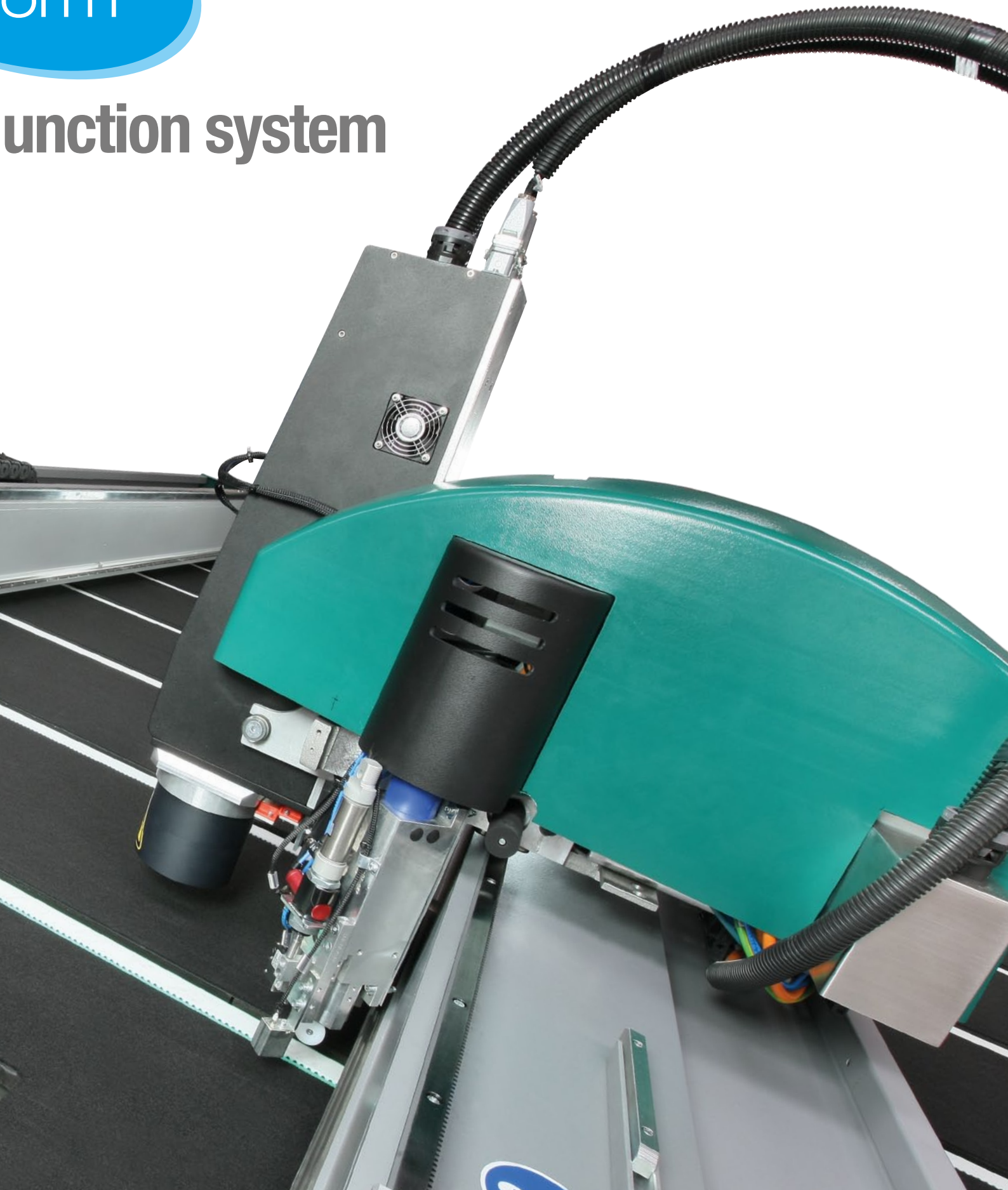
**evolved multif**

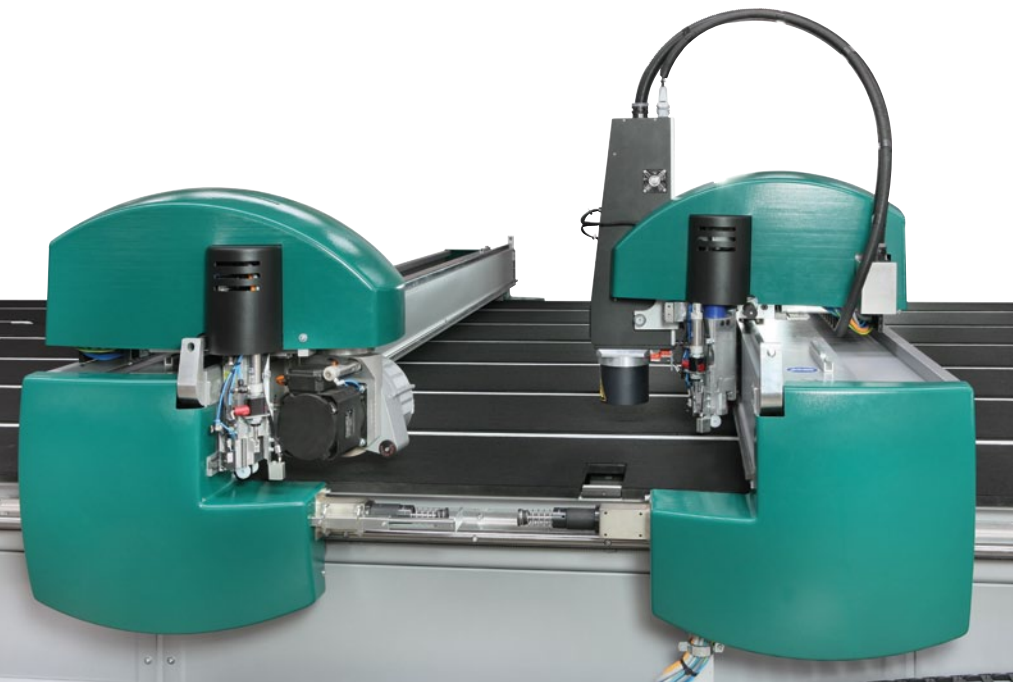




**1x** PLATFORM **2x** BRIDGES **4x** TOOLS  
TO PERFORM WITH

unction system







evolved multifunction system

- **XXL Jumbo Ready:**  
up to 10 m x 3.3 m  
( 393" x 130" ) max glass size
- **Twin Plates:**  
processing two L.E.S. plates  
simultaneously  
( max 3.8 m x 3.3 m – 150" x 130" )
- **Multifunction:**  
Cutting – Low-E Edge Deletion – Label Printing/Laying –  
InkJet Printing – Laser Marking
- **Smart:**  
no lite gets lost !
- **Faster:**  
2 x 200 m/min = half cutting cycle times
- **Autonomous**  
but absolutely **Integrable**



# Bottero

Glass Technologies

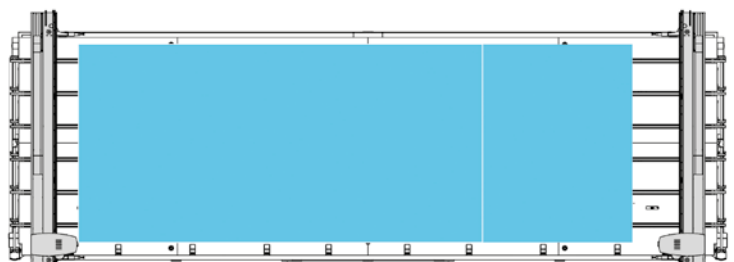
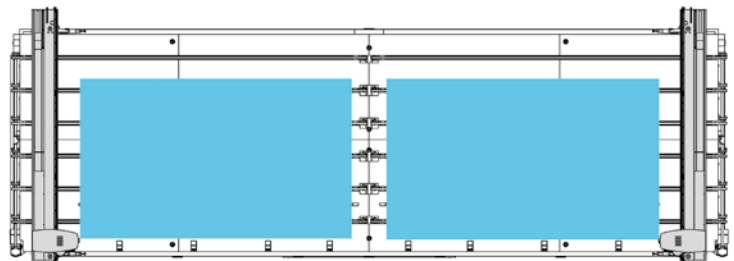


max glass size  
dim. lastra massima

1 x 10.000 x 3.300 mm  
1 x 393" x 130"      single bridge

1 x 8.500 x 3.300 mm  
1 x 335" x 130"      twin bridges

2 x 3.810 x 3.300 mm  
2 x 150" x 130"





## Pick 4 available:



Cutting



Low-E Edge Deletion



Laser Marking



Label Printing / Laying



InkJet Printing



The images and data in this catalogue are only indicative and never override the contract engagement of Bottero S.p.A. For photographic reasons the products is often shown complete with accessories that are not part of the standard equipment of the machine.

FMC001154 - Rev.0

**Bottero**  
Glass Technologies

BOTTERO S.p.A. - via Genova 82 - 12100 Cuneo - Italy  
Tel. +39 0171 310611 - Fax +39 0171 401611  
flatglass@bottero.com

[www.bottero.com](http://www.bottero.com)